

Work	Learning	<b>Destinations Solihull Borough 2010</b>	Careers	Achieve
------	----------	---	---------	---------

**Staying in Learning – 95%**

There has been a significant increase in the percentage remaining in learning which now stands at 95% of the cohort, compared with 92.5% the previous year. This is the highest in learning rate ever recorded, and offers some encouragement in light of the raising of the participation age from 2013. In part at least, however, the rise may be attributed to fewer labour market opportunities being available resulting in some young people remaining in full-time education who might otherwise have preferred a work-based route.

**Full-time Education – 90%**

The proportion of young people remaining in full-time education has risen consistently since the year 2000. The most recent figure is 90% compared with 86% in 2009. The equivalent figure in 2000 was 73%.

This year 83% of young people remaining in full-time education chose to do so in the Borough – the remaining 17% includes young people choosing FE providers in Birmingham, Coventry and Warwickshire and a number who moved out of the area and continued their education in the new area.

**NEET – 4%**

The percentage of year 11 leavers who were classified as not in education, employment or training (NEET) was 4% compared with 5% the previous year (in 2004 the figure was 10.38%). More young people appear to have remained in full-time education, thus delaying their entry to the labour market. Whilst NEET rates for 16 year olds have fallen over the period of the recession the reverse is true for 18 year olds.

**Work and Training – 5.5%**

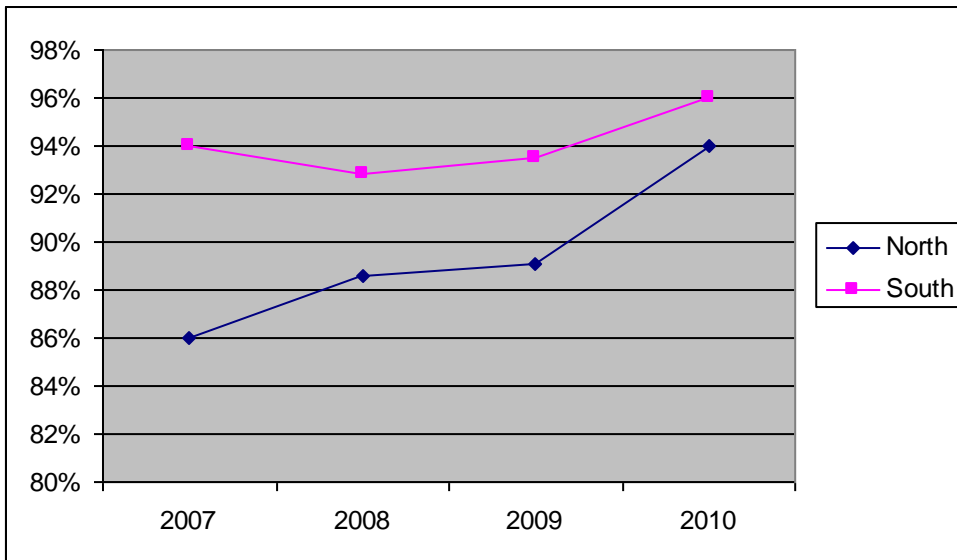
Following the trend of recent years the overall percentage of young people entering work or training (excluding voluntary work and personal development opportunities) has continued to fall. In 2010 only 5.5% of the cohort entered work or training compared with 9% in 2007.

The percentage is now less than a third of the equivalent figure for the year 2000 when it was 19%.

Work	Learning	<b>Closing the Gap</b>	Careers	Achieve
------	----------	------------------------	---------	---------

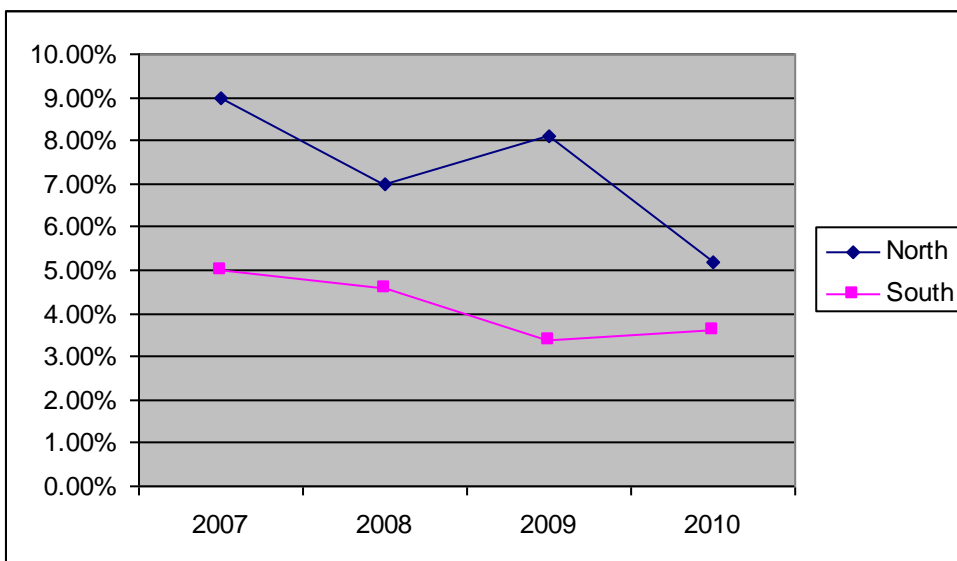
**Percentage In Learning 2007-2010**

**Destination data on completion of year 11 in compulsory education**



**NEET 2007-2010**

**Destination data on completion of year 11 in compulsory education**



Work	Learning	<b>Destinations Light Hall School 2010</b>	Careers	Achieve
------	----------	--	---------	---------

**Destination of Light Hall Year 11 School Leavers 2010 at 1 Nov. 2010.**

	Light Hall		<u>Comparison Percentages</u>		
	Numbers	%	South	North	Borough
			Schools	Schools	
			%	%	%
Further Education	218	92.0	91.0	87.8	90.0
Apprenticeships and Training	9	3.8	4.9	6.2	5.0
<b>Total in Learning</b>	<b>227</b>	<b>95.8</b>	<b>95.9</b>	<b>94.0</b>	<b>95.0</b>
<b>Employed</b>	<b>1</b>	<b>0.4</b>	<b>0.2</b>	<b>0.4</b>	<b>0.5</b>
Waiting for Start			0.1	0.3	0.1
Personal Development					
Not available			0.9	0.2	0.4
Seeking Work/Training	9	3.8	3.3	3.8	3.5
<b>Total NEET</b>	<b>9</b>	<b>3.8</b>	<b>3.6</b>	<b>5.2</b>	<b>4.0</b>
<b>Not known</b>			<b>0.3</b>	<b>0.3</b>	<b>0.5</b>
<b>Total leavers</b>	<b>237</b>	<b>100</b>			

**Further Education**

	Numbers	%
The Sixth Form College	116	53.2
Solihull College Blossomfield	33	15.1
Solihull College Woodlands	1	0.5
St. Peters	1	0.5
Birmingham Metropolitan	1	0.5
City College	3	1.4
South Birmingham	11	5.0
Stratford College	21	9.6
University Coll. Birmingham	13	6.0
Warwickshire College	4	1.8
Not known	3	1.4
Others	11	5.0

Work	Learning	<b>Destinations Solihull Borough 2010 Notes</b>	Careers	Achieve
------	----------	---	---------	---------

The purpose of the Activity Survey, often referred to as the 'Destinations Survey' is to find out what students are engaged in after leaving school. Insofar as it is possible, it is intended that the survey should reflect settled activity and not merely the first destination after leaving school, which may only be only a temporary activity – as at 1<sup>st</sup> November 2010.

Each year there will be a small number of young people who are not included in the survey for a variety of reasons, for example: refused to participate; moved out of contact; or, contact details are no longer current.

#### Staying in Learning

These figures:

- Include all school leavers who are participating in further education (in and outside the Borough) and those in Apprenticeships, Govt funded Training, Work with training (and excludes young people who are in work with no training and in part time or temporary work).
- Relate to Solihull Borough Annual Activity Survey data as reported to NCCIS for 2009, and as submitted for 2010

#### Full-time education

These figures:

- All school leavers who are participating in full-time further education (in and outside the Borough)
- Relate to Solihull Borough Annual Activity Survey data as reported to NCCIS for 2009, and as submitted for 2010

#### NEET

These figures:

- Relate to the local analysis of all school leavers who are: seeking employment, education, and/or training; not available to the labour market (eg illness, pregnant); and, on personal development opportunities (eg Princes Trust).
- Do not reflect the total number of school leavers who are 'Not settled', for example, school leavers who are in part-time or temporary work are not included in NEET.

#### Work and Training

These figures:

- Relate to the local analysis of all school leavers who are engaged in any work or training.